

Section 811 Project Rental Assistance Demonstration (PRA Demo)

Securing New Housing Opportunities through the
Federal Section 811 Program

June 11, 2012

Andrew Sperling, NAMI

Ann O'Hara, Technical Assistance Collaborative

Audio can be accessed through the following conference line

Conference Line: 1-866-266-3378

Passcode: 8224620012



Agenda

- Presentation (60 minutes)
 1. NOFA Context
 2. Section 811 PRA Demo Highlights
 3. How CCD Members Can Participate
- Questions (30 minutes)
- Participants' phone connections are automatically muted due to the high number of callers
- Materials
 - PowerPoint Slides –
 - Available now at <http://811resourcecenter.tacinc.org/>

Submitting Questions During and After the Webinar

- We will be accepting and answering some questions today through the Private Chat feature of the webinar software.
- Questions can also be submitted to TAC via email at gschaak@tacinc.org and to HUD at PRADemoapplications@hud.gov

1-866-266-3378
Passcode: 8224620012



Attendees

Trainings@tacinc.org

Session Details

Session Name: Practice Session: Section 811 Project Rental Assistance (PRA) Demonstration NOFA: Expanding Integrated Housing for Person with Disabilities in your State
Leader: Gina Schaak

Step 1: Click on the Private tab of the Chat box in the lower left corner of your screen.

Feedback

Chat

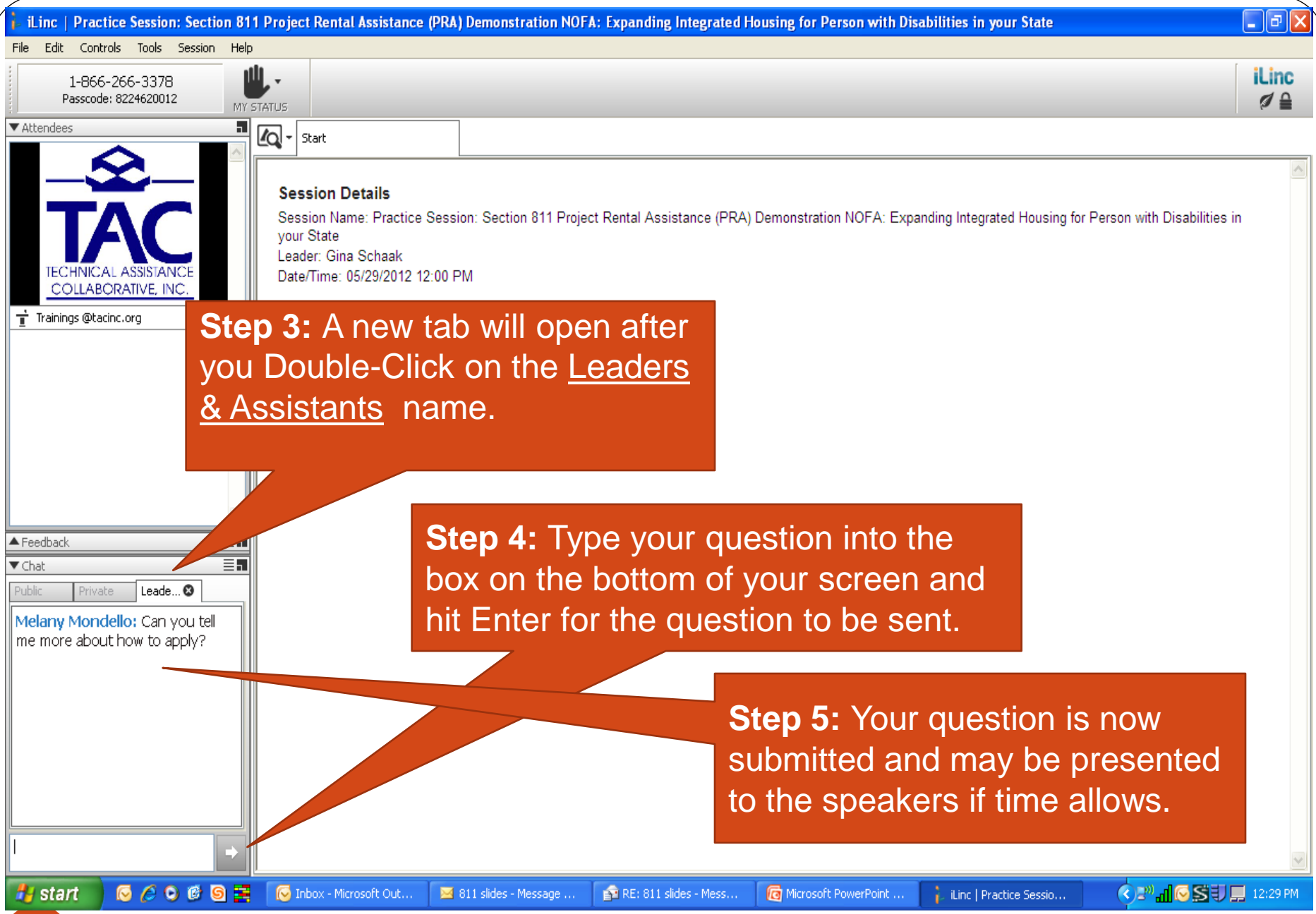
Public Private

Leaders & Assistants
Trainings@tacinc.org

Double-click the Leader or Assistants to chat privately.

Step 2: Double-Click on the Leaders & Assistants text to open a new tab.

TAC



Step 3: A new tab will open after you Double-Click on the Leaders & Assistants name.

Step 4: Type your question into the box on the bottom of your screen and hit Enter for the question to be sent.

Step 5: Your question is now submitted and may be presented to the speakers if time allows.

NOFA Context

Context: States

- States are increasingly challenged to:
 - Reduce reliance on expensive institutional care
 - Assure compliance with the U.S. Supreme Court's *Olmstead* decision
 - Prevent and end homelessness among people with disabilities
- Section 811 Program can help meet this challenge by:
 - Providing community living opportunities for people with disabilities
 - Expanding integrated permanent supportive housing options
 - Engaging the development community in providing units for people with disabilities in mainstream affordable housing
 - Initiating and supporting state-level cross system collaborations

“Old” Section 811 Program

- Through community-based non-profit sponsors, created group homes and independent apartment complexes solely for people with disabilities.
- 30,000 units created between 1992-2010
- Approach: One project at a time through direct capital grants linked with on-going operating subsidy
- During recent years, only created 600 units per year
- Section 811 needed to be modernized and improved to survive

Melville Act of 2010

- Reformed and revitalized the Section 811 program
- Authorized a new “stand alone” Section 811 Project Rental Assistance (PRA) option targeted to State Housing Agencies
- Requires a formal Interagency Partnership between the State Housing Agency and the State Health and Human Services/Medicaid agencies
- PRA can systematically create highly integrated supportive housing in State Housing Agency-financed affordable housing properties that provide rental housing to the general population
- Highly cost effective and systematic state-level supportive housing approach
- Supportive services must be voluntary.

Supportive Housing Partnership

Critical Element	Source	Examples
Capital	<ul style="list-style-type: none"> • HFA • State or local govt. • Private foundation 	<ul style="list-style-type: none"> • Low Income Housing Tax Credits • Bonds/Trust Funds • HOME • Foundation funds
Operating Subsidy	<ul style="list-style-type: none"> • HUD 	<ul style="list-style-type: none"> • Section 811 PRA
Support Services	<ul style="list-style-type: none"> • State Medicaid Agency • State Human Services Agency 	<ul style="list-style-type: none"> • Money Follows Person • Home and Community Based Waiver Services • State services funds • Rehab Option

Federal Policy Context

- Current Federal policy context is supportive
 - *Olmstead*
 - HUD-HHS Partnership
 - Affordable Care Act
 - Preventing and Ending Homelessness
- Funding available for services/supports (e.g., Money Follows the Person, Medicaid waiver and optional services, comparable state-funded long-term care services, etc.)
- HUD has created FY 2012 Section 811 PRA Demonstration Program targeted to States to address these needs and link to these services/supports

PRA Demo Highlights

NOFA Timeline

- NOFA released May 15, 2012
- Applications due July 31, 2012 11:59 p.m.
- Submit through www.grants.gov
- \$85 million available for new units
- Estimated 2,800 units nationally
- 9-16 awards
- Initial award for 5 years with 1 year renewals
- \$2 million minimum and \$12 million maximum state grant
- http://portal.hud.gov/hudportal/HUD?src=/program_offices/administration/grants/fundsavail/nofa12/sec811PRAdemo

Who Can Apply?

Eligible Applicants:

- Agency currently allocating Low Income Housing Tax Credits (LIHTC)
- Any state housing or community development agency allocating and overseeing assistance under the HOME Investment Partnership (HOME) or a similar federal or state program
- State, regional, or local housing agency or agencies
- Partnership or collaboration of state housing agencies and/or state and local/regional housing agencies

Eligible Applicants

- Only one Eligible Applicant per state is eligible to receive funding
- State Health and Human Services/Medicaid agency can only be included in one application for Section 811 PRA Demo funds
- If the State Health and Human Services/Medicaid agency is included in multiple applications from one state, none will be considered by HUD

Eligible Activities

Section 811 PRA Demo Funds can be used for:

- Project-based rental assistance in eligible multi-family properties
- Administrative Costs
 - No more than 5% of total award

Eligible Properties

- Any new or existing multifamily property owned by a nonprofit or private entity with at least 5 housing units
- Housing assisted with Section 811 PRA Demo funds must have a minimum 30 year use restriction for extremely low-income persons with disabilities
- Units must be dispersed throughout the property and cannot be segregated on one floor or in one area of a building
- Owners may designate certain unit types (e.g., accessible unit, 1 bedroom units, etc.) rather than designating specific units (e.g., Unit 101, Unit 102, etc.)
- Units may be both accessible and/or non-accessible

25% Limitation

- No more than 25% of the total units in Eligible Multifamily Properties can:
 - (1) be provided Section 811 PRA Demo funds;
 - (2) be used for supportive housing for persons with disabilities; or
 - (3) have any occupancy preference for persons with disabilities
- 25% is a maximum; states can choose to place fewer PRA Demo units in an Eligible Property (e.g., State can set a 10% or 15% maximum)

PRA Demo Operations

- Eligible tenants can be selected in accordance with state approved tenant selection policies, criteria and federal non-discrimination laws
- Tenant's rent contribution cannot exceed 30% of adjusted income
- Initial lease between the tenant and the owner must be not less than one year

Eligible Tenants

- Extremely low-income (i.e., 30% of AMI or below);
- Disabled as defined in NOFA;
- Household must include at least one individual with a disability who is 18 years of age or older and less than 62 years of age at the time of admission into the property; and
- This person must also be eligible for community-based, long-term care services as provided through Medicaid waivers, Medicaid state plan options, state funded services or other appropriate services related to their disability.

Inter-Agency Partnership Agreement

- Threshold NOFA requirement
- Must include the Eligible Applicant and the state agency that is charged with administering State Health and Human Services programs and policies and the State's Medicaid program; both if two different agencies

Inter-Agency Partnership Agreement

The Agreement must include:

- A detailed description of the target population(s) to be served;
- Methods of outreach and referral to PRA Demo units; and
- A commitment to make appropriate services available for PRA Demo residents

Getting Involved

What States Should Be Doing Now

- Inter-Agency Partnership Agreement
 - Identifying target population(s)
 - Identifying available support services commitments
 - Identifying/developing infrastructure for outreach and referral to 811 PRA Demo units when available
- NOFA Response
 - Determining number of units in application
 - Determining any geographic limitations

Next Steps

- Is your state applying?
- Do the target populations meet state MH and IDD priorities?
 - Olmstead
 - Homelessness
 - Other
- How can the necessary support services commitments be made available?
- Will the proposed infrastructure be able to identify tenant issues and address these to better ensure housing retention?

Additional Resources

- <http://811resourcecenter.tacinc.org/>
 - Webinar audio and slides posted on website
- http://portal.hud.gov/hudportal/HUD?src=/program_offices/housing/mfh/grants/section811ptl

QUESTIONS

Thank you for joining us today!

Applications due July 31, 2012 11:59 p.m.

Questions be submitted to TAC via email at
gschaak@tacinc.org and to HUD at
PRADemoapplications@hud.gov